

Elements of Art

Forms and Values

Values

A way of adding depth
to an artwork using
shading techniques

Value Scale



A value scale shows the range of shades you can create using a pencil.

Once you learn how to
control the amount of
pressure you use when
drawing....

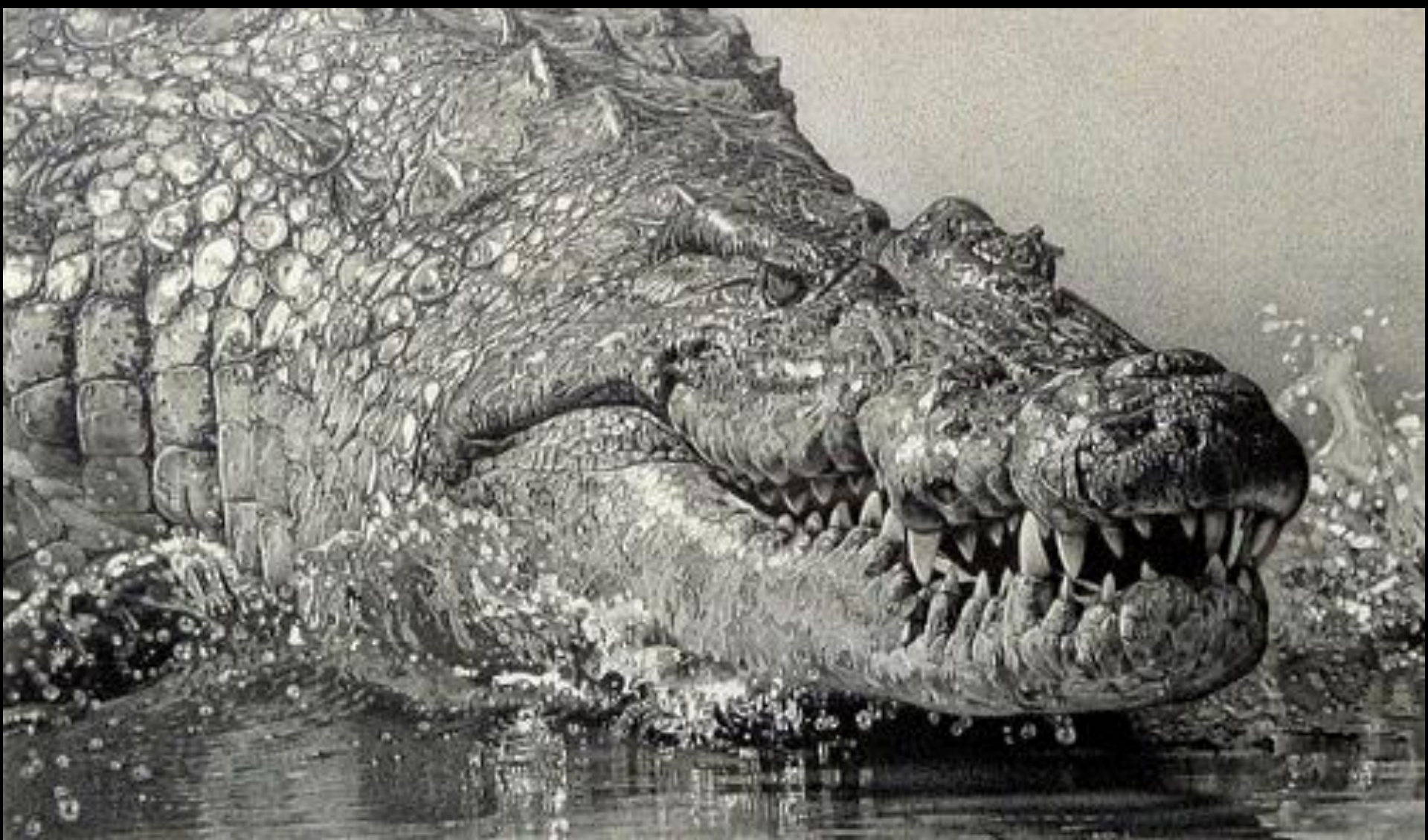
... then you can draw
pictures that look like
this.





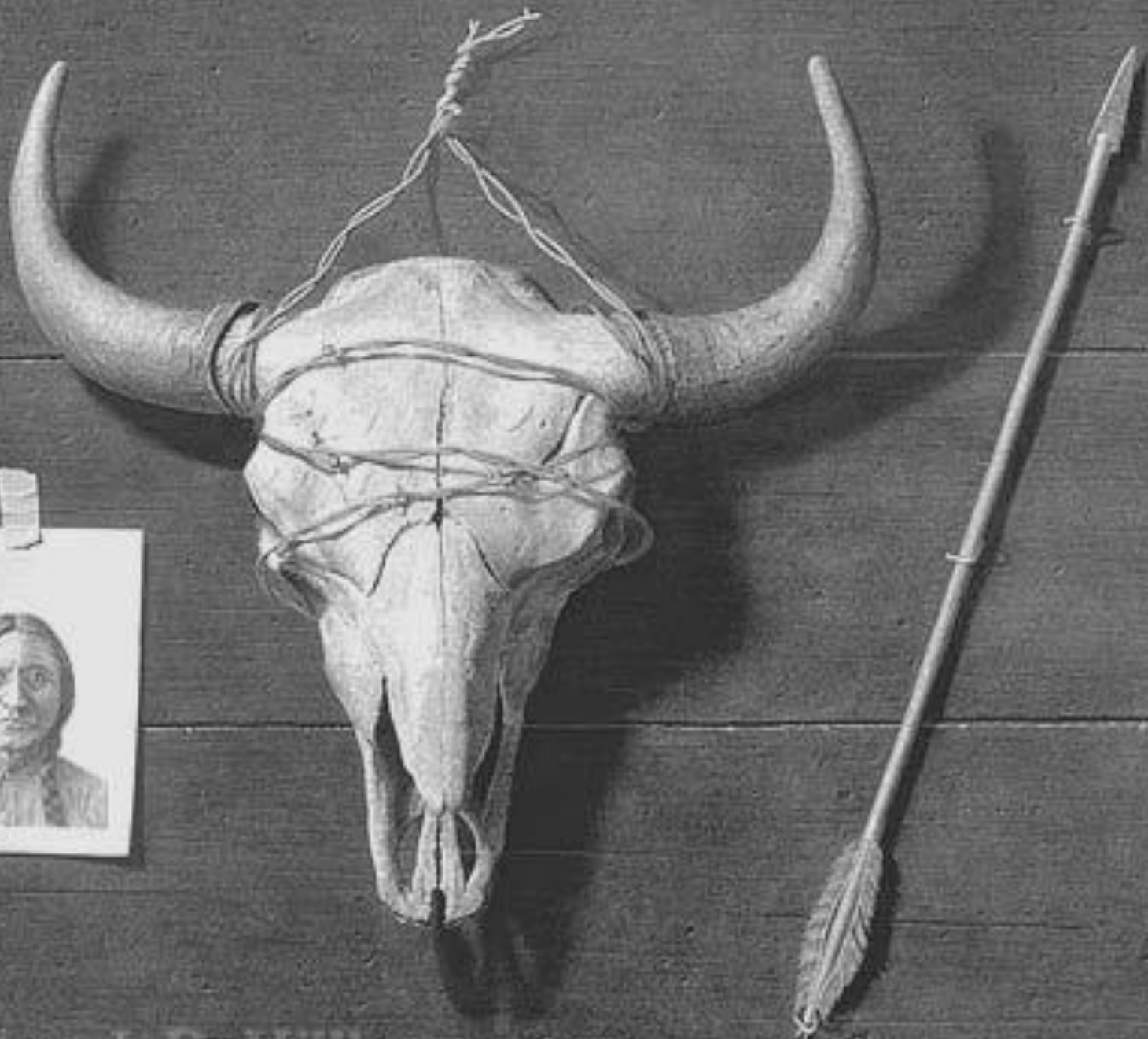


www.dueysdrawings.com









Copyright © J. D. Hillberry

Copyright J. D. Hillberry
www.jdhillberry.com



*Copyright 1941
J. D. Hillberry*





Copyright 1993 J. D. Hillberry

J. D. Hillberry

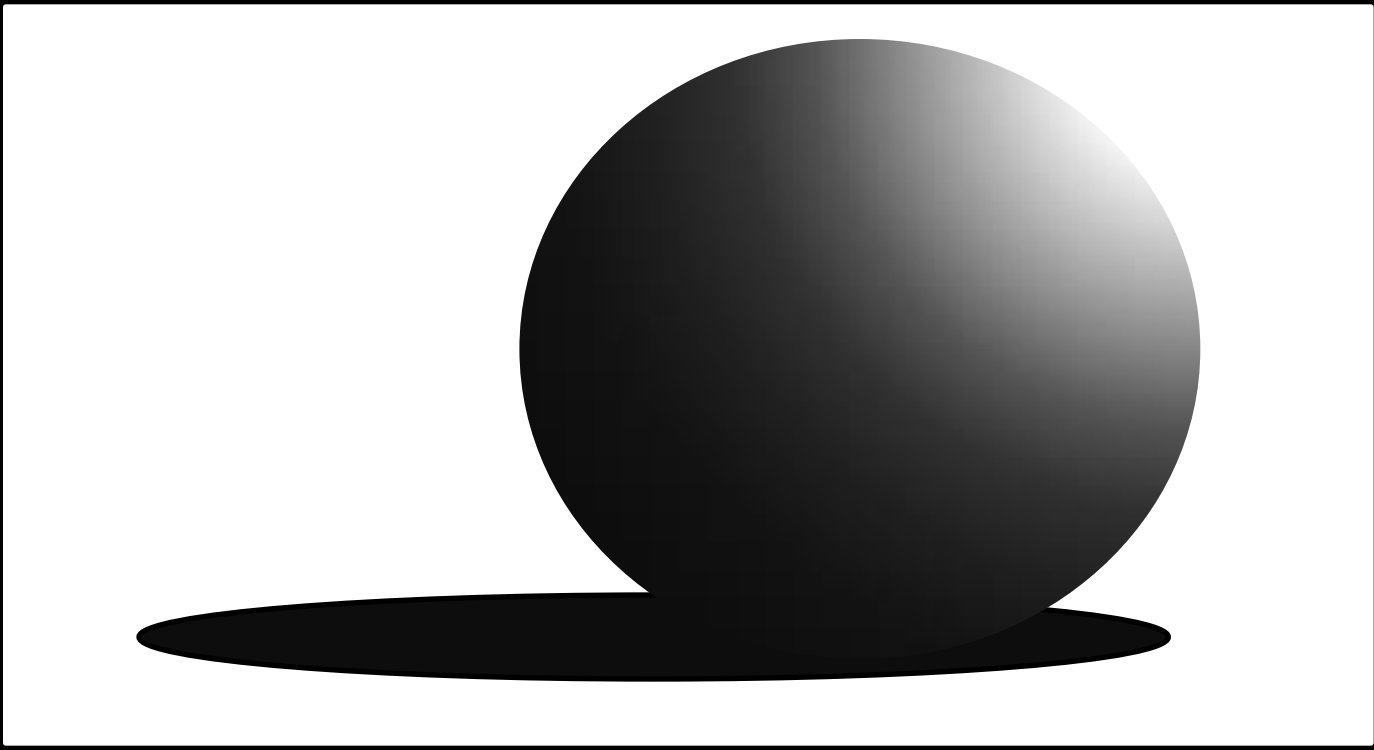


© Aantje

Today's Assignment

Draw a value scale and
shade a ball.

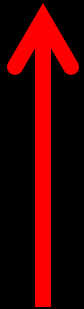
Here is an example



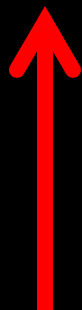


Draw 7 boxes.

No you don't need a ruler.



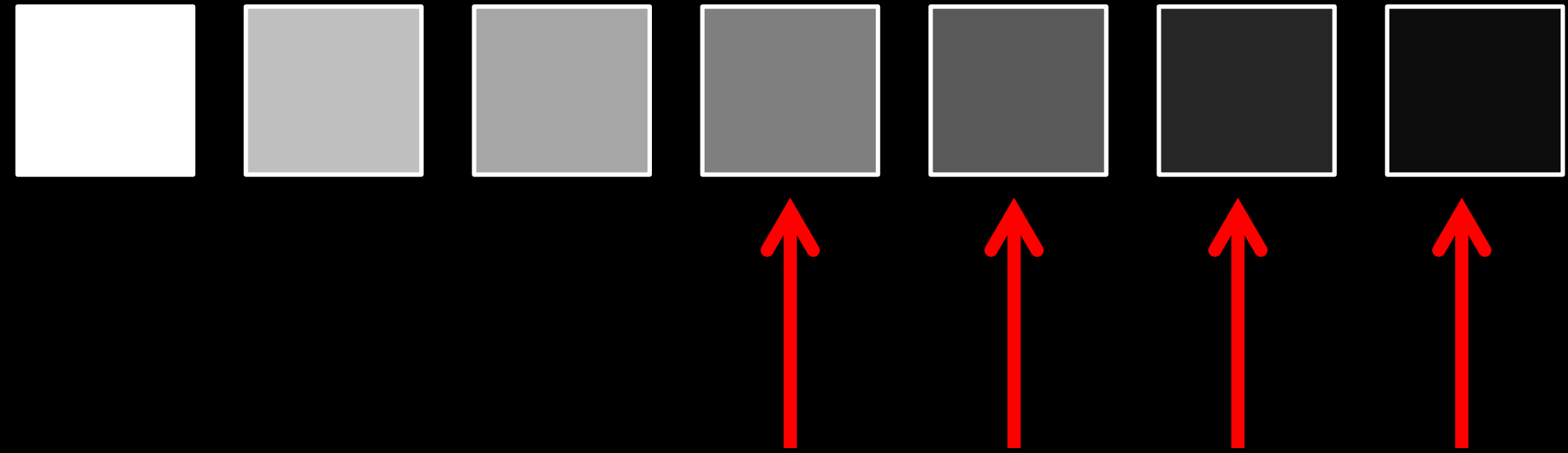
Leave this box empty.



Hold your pencil at the eraser. Fill in this square as light as you can.

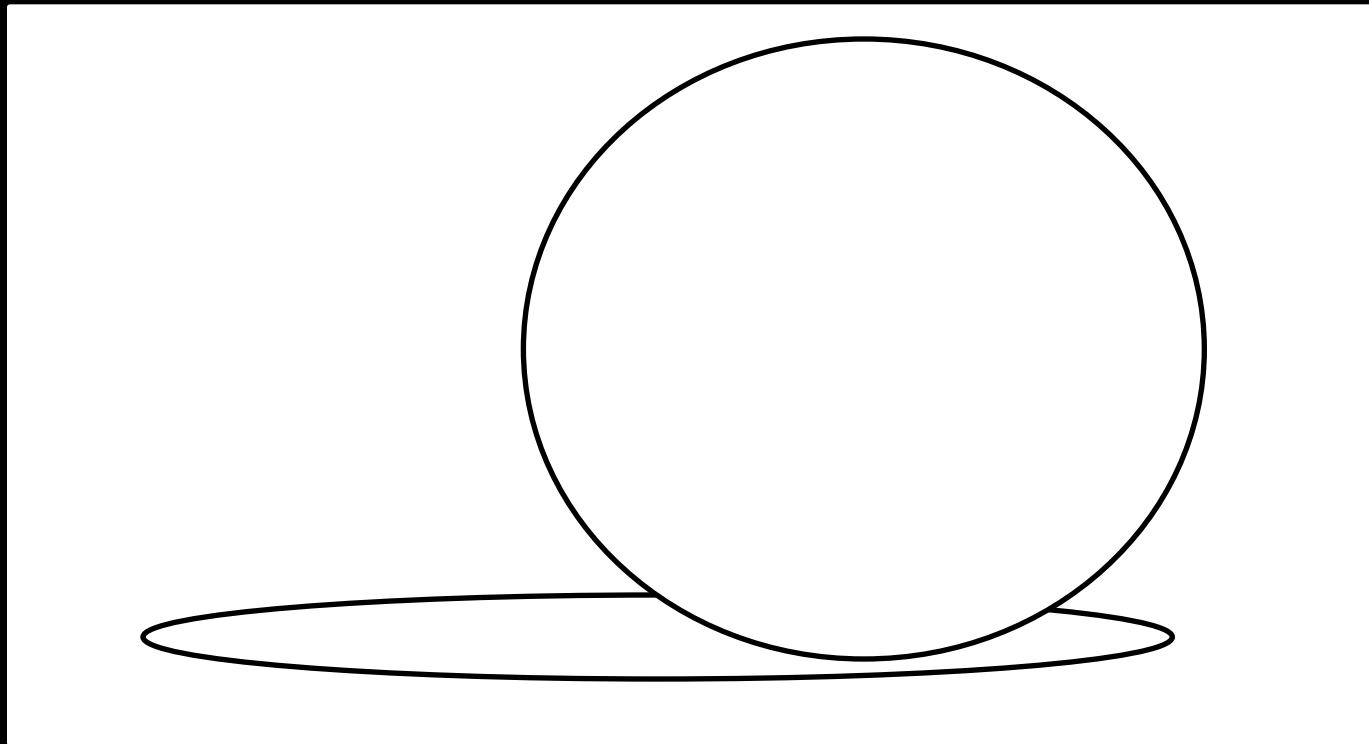


Now slide your fingers to
the middle of your pencil.
Add just a little pressure.

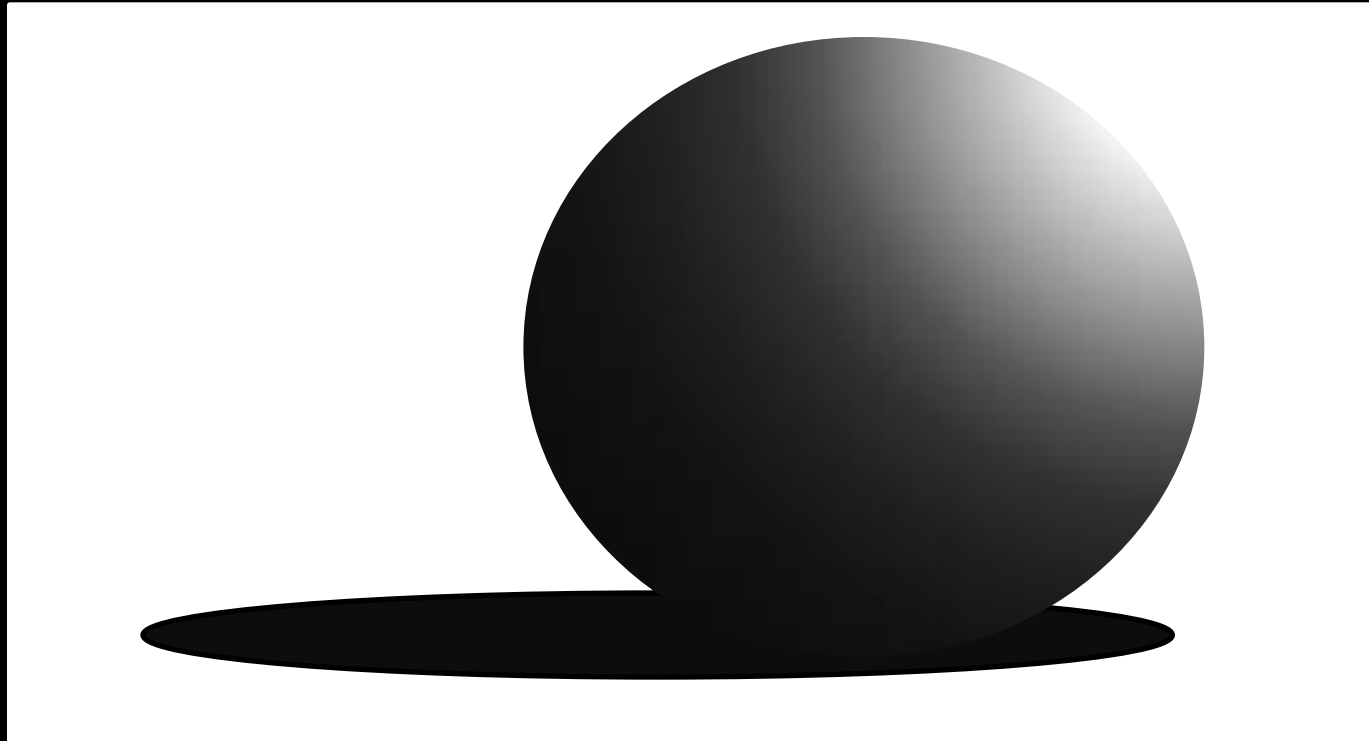


Now each box gets a little darker as you move towards the right.

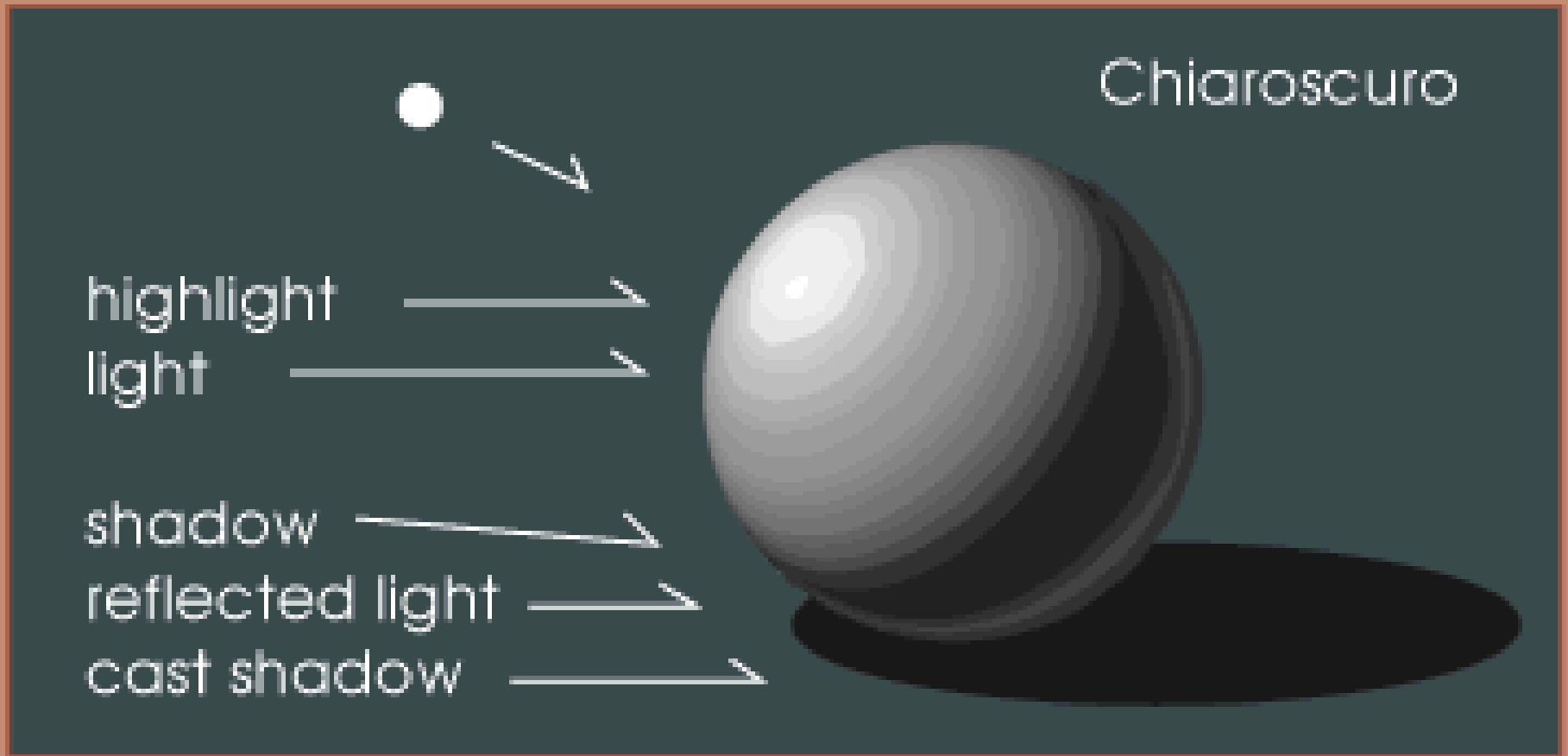
Draw a circle and its shadow below your value scale.



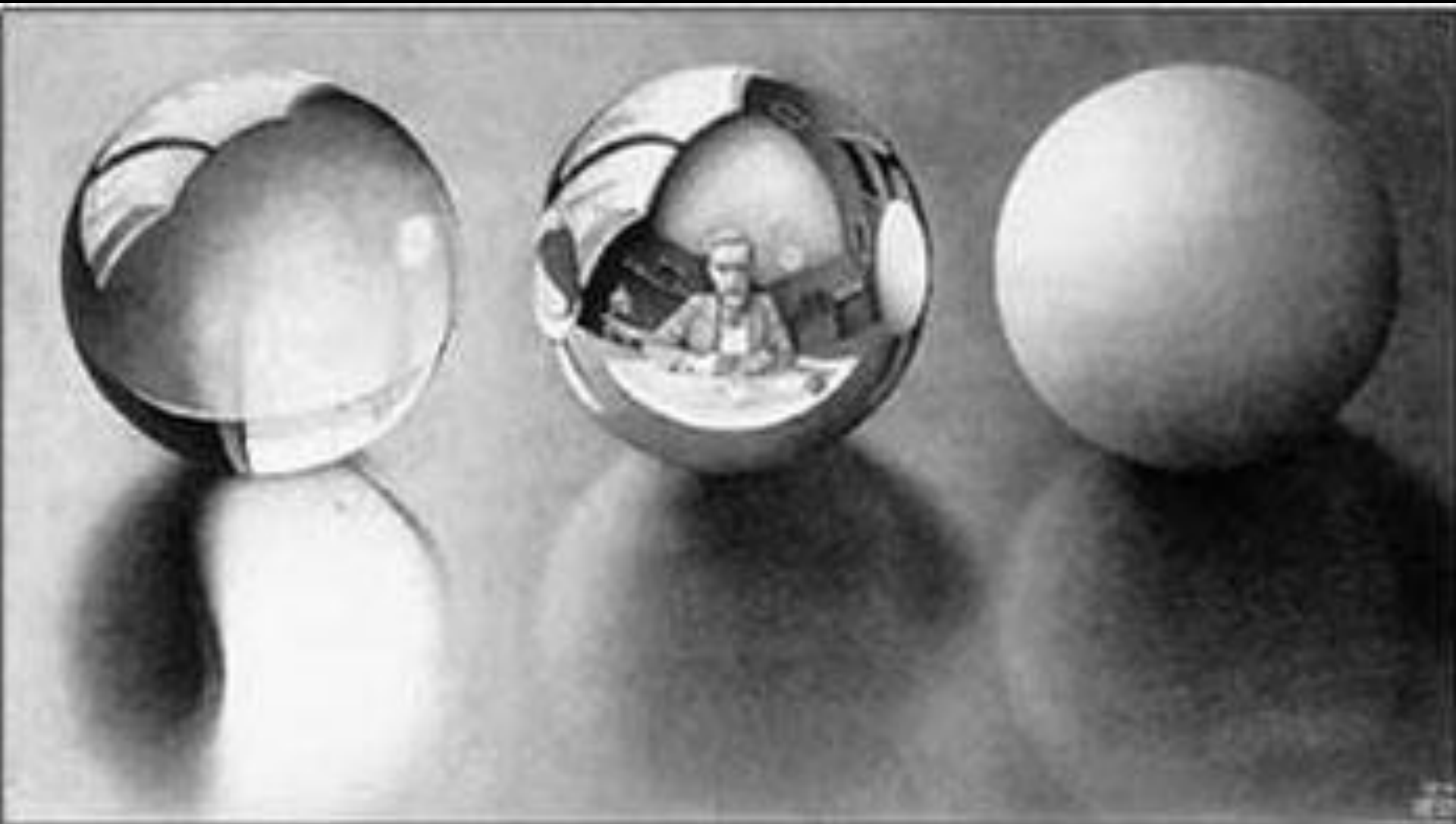
Shade your ball until it
looks like this.



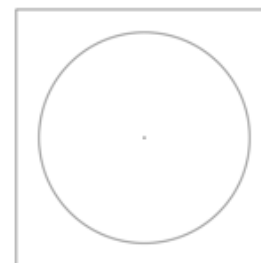
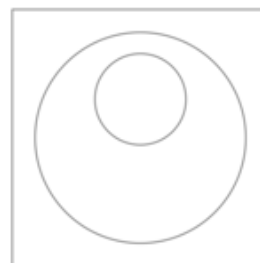
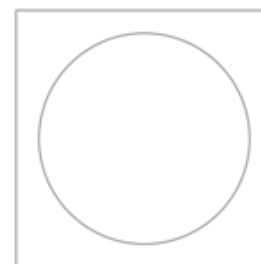
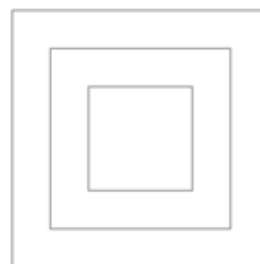
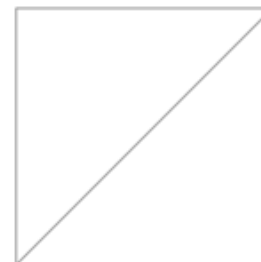
More Examples

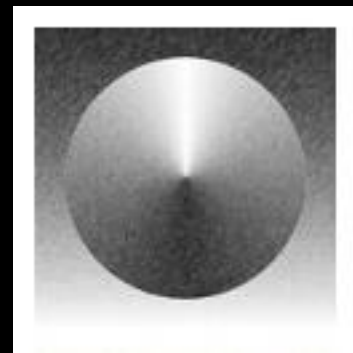
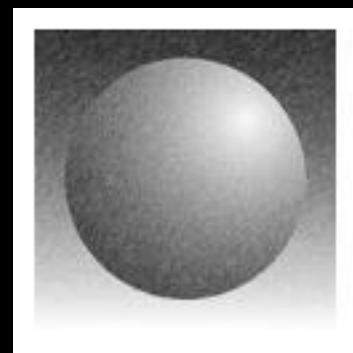
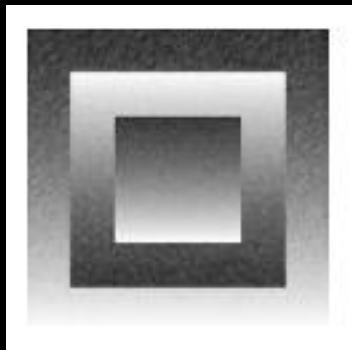
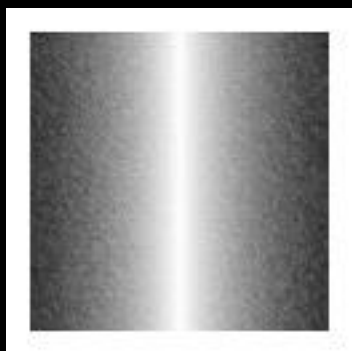


M.C. Escher



Basic Shapes





Make Sure you finish your
value scale and ball before
you leave class today.

Complete the value scale using the stipple technique. Then shade the ball by stippling the values.

--	--	--	--	--	--	--

